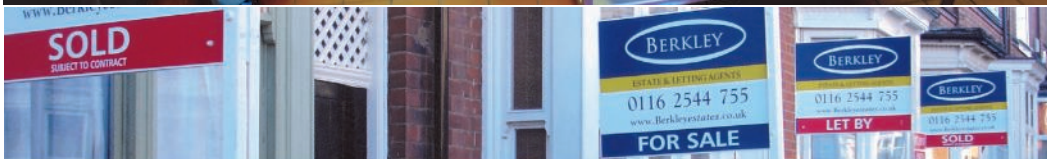




## PAY AS YOU FEEL CAFE!



ESTATE & LETTING AGENTS

75 Hinckley Road, West End, Leicester. LE3 0TD

**0116 2544 755** [berkleyestates.co.uk](http://berkleyestates.co.uk)

# SA Plumbing & Heating

30 Years Experience

Boiler Replacement & Servicing

Full Central Heating & Upgrades

Cylinder & Tanks Replaced

Full Bathroom Fitting & Tiling

**Shaun**

Office

0116 2919116

Mobile

07802894895



Bosch Group

Accredited Installer

Fully Insured



www.saplumbing.co.uk



158845

Free Quotation - No Call Out Charge



## Painting and Decorating

**A.W. NOTMAN**  
Est. 1982



### Interior and Exterior

Domestic & Commercial Work, Insurance Quotes Welcome

Tel: 0116 2854 160 Mobile: 0776 822 0793

e:awndecor@yahoo.co.uk

www.a-w-notman-painting-and-decorating.co.uk

87 Nevanthon Road Leicester LE3 6DR

# A.J.S Architectural Services

*Building Plans for*

## EXTENSIONS - LOFT CONVERSIONS STRUCTURAL ALTERATIONS

From initial design right through to Planning  
Permission and Building Regulations approval.  
We take care of all the details, liaising with the local  
authorities on your behalf.

**CALL FOR YOUR FREE CONSULTATION**

T: 0116 254 9576

M: 07788 416 806

M: 07974 263 607

E: ajs-architectural@hotmail.co.uk



## A.J.S Architectural Services

24 Wentworth Road, Leicester, LE3 9DF

Over 20 Years Experience

Expert Advice, Reliability and Quality

## Hello From The Editor

Welcome to the August edition of the Western Park Gazette.

This month: A café with a difference opens in West Leicester where you either pay what you think the meal is worth or volunteer services instead. Very tasty it all looks too!

Roger Blackmore writes about the history of Leicester's parks. Kev Sharkey from Hinckley Road Police updates us on anti social behaviour issues, illegal motor biking and car thefts whilst Helen Knott sympathises with the trauma of grand-parenting over the long summer break.

The controversy over proposals to build a massive block of flats on Western Road rumbles on as protesters get their objections in, the Western Park Beer Festival approaches, as does Westival in Braunstone Gate... Yay! And Tony Huxley gets his James Bond tux on to tackle the Weed From The East, a sort of From Russia Without Love.

The Brain Tazers, Crossword and Sudoku are ready to ambush you on the inside back page!

If you've got a local news story then email

editor@westernparkgazette.co.uk

Visit [www.westernparkgazette.co.uk](http://www.westernparkgazette.co.uk)

Follow us on Twitter @mygazette & Facebook  
by searching for the Western Park Gazette.

### Just So You Know.....

- Content in this magazine may not reflect the beliefs or opinions of the publisher.
  - The copyright of all text and advertisements designed or authored by The Western Park Gazette and its officers, remains with the publisher at all times.
  - If you're supplying under copyright artwork or articles, Rapsallion Media assumes you have the right to do so.
  - All advertising copy you supply must be accurate, truthful and be ASA compliant.
  - You need our permission to reproduce any part of this magazine or associated website content.
  - We are not responsible for transactions between Gazette advertisers and their clients.
  - We don't accept liability for loss or damage as a result of omissions or errors once content is submitted.
  - We don't print editorial endorsements of products or services. Full terms and conditions are on line.
- All content is published in good faith.

**Copy Deadline Sept 1st 2015**

To Contact - Call 07939 115 724

e:editor@westernparkgazette.co.uk

e:sales@westernparkgazette.co.uk

Published by Rapsallion Media

62 Ainsdale Rd

Leicester LE3 0UA

Printed by Flexpress Ltd

6 Coal Cart Road, Interchange,

Birstall, Leicester, LE4 3YB





# Events Diary

**Fosse Singers:** Fosse N'hood Centre. Weds. 7pm.

**International Folk Dancing:** Monthly 2nd & 4th Fri. St. Anne's Hall. 2-4pm. Tel: Geoff on 0116 285 8352.

**Peter Crebbin's Cool Swing Band:** 1st Sun Monthly. Café Chino at Hilton Hotel, Meridian. 1-3.30pm

**Thursday Club:** Thursdays. 2-4pm. Robert Hall, 147 Narborough Rd.

**West End Pay As You Feel Café:** Thursdays 6-8.30pm. West End Centre. Andrewes St. LE3 5PA.

**Heritage Sundays:** Monthly last Sun. Mediaeval city open days/tours. 11-3pm. w:goleicestershire.com

**Leicester Oktoberfest:** 19-23rd Aug. Abbey Park. 4-11pm. Free, except £5 entry on Sat 22nd.

**Castles, Gargoyles & Clay Fun Day:** 20th Aug. Guildhall. 11-3pm. Activities £2.50.

**Wizards Wonders:** 25th Aug. Abbey Pumping St. 11-4pm. Free Entry. Activities £2.50.

**Grenadier Guards Assn Garden Party:** Sun 23rd Aug. WLCC, 55 Westcotes Dr. 1-3pm.

**Company (Musical):** 24-29th Aug. Upstairs At The Western. 7.30pm. w:upstairsatthewestern.com

**Cosmopolitan Carnival:** 29th Aug. City Centre.

**Westival:** 30th Aug. Braunstone Gate. 12-6pm.

**Odd Fellows Brass Band:** 30th Aug. Western Park Band Stand. 3-4pm. Free

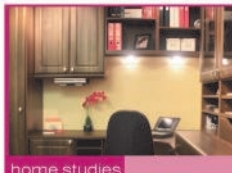
**Western Park Beer Festival:** 11&12th Sept St. Anne's Church Hall. Letchworth Road.

# Holmfields

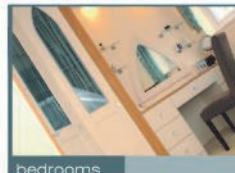
BUILT IN QUALITY



kitchens



home studies



bedrooms

**Your Local Family Run Business**  
Fitted Kitchens, Bedrooms & Studies • Design & Planning  
Installation Services Including Building Work

Holmfields Showroom 17 Carlisle Street Leicester LE3 6AH  
T: 0116 255 6669 F: 0116 255 6668 E: support@holmfields.co.uk

[www.holmfields.co.uk](http://www.holmfields.co.uk)

## RK PROPERTY SOLUTIONS

**SELL YOUR HOUSE FAST FOR CASH**  
**We Buy Any Property Any Condition - Any Area**

- ▶ Free property valuation
- ▶ Stop repossession
- ▶ No upfront costs
- ▶ No estate agency fees
- No legal fees to pay
- ▶ Guaranteed sale
- ▶ Chain free

- ▶ Private & confidential service
- ▶ Completion date to suit you
- ▶ Written offer within 48 hours

For a private, confidential chat

**CALL RICK**

**T: 0116 316 9116**

*We are a local family property company*



# Fosse Taxis

Your Local Taxi Service Available 24 Hours

**4,6 AND 8 SEATER VEHICLES  
FARES PRE-SET**

(Know the cost before you travel)

**FREE RINGBACK ON ARRIVAL**

LOW COMPETITIVE FARES FROM JUST

**£3.50!**

Ring us NOW for a Quote

**0116 232 22 22**

[www.fosse-taxis.co.uk](http://www.fosse-taxis.co.uk)

## Pay As You Feel Café

If you've ever had a meal out and grumpily thought "I'd like to pay what it was really worth", well now you can, but in a good way!

West Leicester's first 'Pay As You Feel' café is now open for business at the LCIL building on Andrewes Street off Hincley Road.

Every Thursday evening between 7-8.30pm volunteers roll up their sleeves and get cooking.

The café opened its doors for the first time on 30th July. Bobby from the Real Junk Food Project who run the café said: "It's been nuts since we got here! We rescue food and turn it into tasty meals. There's no emphasis on payment. You can pay what you think it's worth with cash, cleaning or washing up. We even have a buskers' corner where you can sing in return for food".

If the project is successful, Bobby has plans to open similar cafes in across Leicestershire.



## CODE RED

Over 100 people attended the 24th of July "Say No To Code" event held at the Western pub. Originally planned as a party on Briton Street, rain forced organisers to host it indoors.

Builders have bought the coach house behind the Western, the adjacent hosiery factory and the Baby Planet site for the £30 million expansion.

The new Western Road CODE student accommodation plans have angered many Westcotes residents and hundreds have objected to the effect a 14 storey building will have on the area.



## Furniture for

- Dining Rooms
- Living Rooms
- Bedrooms
- Offices

**FREE  
PARKING**

**SECOND HAND FURNITURE FLOOR  
NOW OPEN!**

**10% DISCOUNT!**

**WITH THIS ADVERT**

Valid until 31.09.2015



**ALSO STOCKING**

**Cookers, Dishwashers  
Fridges & Freezers**



[www.mickanddens.co.uk](http://www.mickanddens.co.uk)

**63 King Richard's Road Leicester LE3 5QG**

**T: 0116 233 8828 M: 07710 025 109**

**e: [mick@mickanddens.co.uk](mailto:mick@mickanddens.co.uk)**

Est. 1973





# THE CROWS NEST

THE BEST FOR FAMILIES, FOOD AND LIVE ENTERTAINMENT

1 GLENFIELD ROAD EAST LEICESTER 0116 262 8826

## KIDS' CLUB EVERY THURSDAY

Through August With Jack In The Box & Special Guests  
PEPPA PIG, SPIDERMAN, ANNA, ELSA & MANY MORE!

VISIT OUR BOUNCY CASTLE, PIRATE SHIP & SANDPIT!



**FREE TOY WITH EVERY MEAL FROM OUR NEW CAPTAIN CROW KIDS' MENU!**

## GREAT ENTERTAINMENT 5 NIGHTS A WEEK!

MON: POKER WEDS: BINGO/PLAY YOUR CARDS RIGHT & DEANO'S KARAOKE DISCO

THURS: CRAZY GIZZO'S KARAOKE PARTY FRI: DAVE MAZZEI KARAOKE

EVERY SAT: DJ COOKIE & TOP LIVE ENTERTAINMENT

## FOOD AVAILABLE 7 DAYS A WEEK TILL LATE

• MAIN COURSE £5.99 OR 2 FOR ONLY £10!

## DON'T MISS CROWSFEST



### BANK HOLIDAY MONDAY 31ST AUGUST

• GREAT KID'S SHOWS WITH JACK IN THE BOX & LIVE ANIMALS

• BBQ • PRIZES • BOUNCY CASTLE • GIVEAWAYS • DISCO

CHARITY HEAD SHAVE - CAN YOU BRAVE THE SHAVE?

KELLY JENNS - KATY PERRY TRIBUTE SHOW

## GIGS AT THE CROWS NEST



• SAT 22nd AUG: FATHER TED

• SAT 29th AUG: EDDIE DUBLIN

• SAT 5th SEPT: AT ARMS LENGTH

[thecrownsnestleicester.com](http://thecrownsnestleicester.com); [thetudorleicester.com](http://thetudorleicester.com)

## THE TUDOR

TUES: POKER FROM 8:15pm THURS: BINGO & PLAY YOUR CARDS RIGHT FOLLOWED BY

KARAOKE FRI: DISCO SAT: KARAOKE & DISCO SUN: PLAY YOUR CARDS RIGHT.

• PRIVATE FUNCTION ROOM & UPSTAIRS TERRACE BAR FOR HIRE

• FAMILY GARDEN AREA WITH BOUNCY CASTLE

28th AUGUST: VELVET SOULS

**GET IN EARLY!  
NOW TAKING  
XMAS PARTY  
BOOKINGS!**



100 TUDOR ROAD, LEICESTER LE3 5HT 0116 262 8826

# Our Green Heritage

It was whilst on holiday in the little Suffolk town of Aldeburgh that I first came across the setting up of fitness equipment or "outdoor gym" in a local park. Today these are being established in a range of City Parks in Leicester and are proving quite popular.

Back in the 19th century the city fathers were initially none too keen on setting up municipal parks. They hoped that wealthy benefactors would donate suitable open spaces, as had been the case in many other towns and cities. Interest did start to be aroused in establishing a park around the Abbey ruins and this received the strong support of James Thompson, the editor of the Leicester Chronicle, a highly influential figure. Thus it came about that in 1882 Abbey Park was opened by the Prince and Princess of Wales.

Another open space was the old racecourse which eventually became Victoria Park. Described by Malcolm Elliott in his excellent book, Victorian Leicester, as "a rather shameful piece of wasteland...where cricket was played and nursemaids flirted with young men while they took their charges for walks." Tastes changed and Vicki Park became the popular open space it is today.

As the 19th century drew to its close two further

pieces of land came on the market establishing the 36 acre Spinney Hill Park and our own much larger Western Park, formerly the Mellor estate.

Perhaps the greatest debt the city owes is to Charles Bennion, a supporter of the purchase of Western Park, who in 1928 was to buy Bradgate Park and donate it to the public. Few cities have such an historic deer park on their doorstep.

In a recent Gazette article we looked at the purchase of the land at Braunstone, part of which became Braunstone Park. The 20th century was also to see the opening up of Watermead Park in the north of the city which is so attractive to bird life. Another open space close to the River Soar is Bede Park, which came into being only a few years ago.

Each of these green lungs, including a range of smaller parks and gardens such as Fosse Recreation Ground and Westcotes Gardens make up a city landscape in which getting on for twenty per cent of the city is public open space. And the outdoor gyms are the latest feature in our parkscape.

© Roger Blackmore



Westcotes Park

**THOMAS**

**BUILDERS & CONTRACTORS**

**PERCY**

*Our Reputation is Building  
Established 1982*



- Extensions • Alterations • Conversions
- Loft Conversions & Roofing
- Disabled Adaptions & Wet rooms

**0116 255 5675**

6 Gimson Road, Leicester LE3 6DY  
www.leicester-construction.co.uk  
e: admin@thomaspercy.co.uk

**ES Elizabeth Stone Gardens**



**Tel: 07838 391175**

**Your Local Expert Gardener!**  
**Garden Maintenance**  
**Lawn Care & Hedge Cutting**  
**Garden Design**  
**Specialist Pruning**

Fully qualified with over 10 Years of Stately Home & Botanical Garden Experience  
e: elizabeth@elizabethstonegardens.com



Look for es\_gardens



# Shepherds Bathrooms

73 Hinckley Road Leicester LE3 0TD



\*Ts & Cs Apply

cleargreen Burlington BRITTON aqua clearwater Zamori  
BATHROOMS BATHROOMS CABINETS BATHS

**Superb Bathroom Supplies and Installation  
Fitted by Qualified and Time Served Experts  
Huge Range to Fit Any Budget  
Extensive Showroom**

Ring us for more information or call into our showroom

## 0116 255 4351

Est. 1925

[www.shepherdsbathrooms.com](http://www.shepherdsbathrooms.com)

**Open Monday-Saturday**



# KNOTT'S LANDING

**You see the worn faces everywhere. Washed out, exhausted from effort, drained of all stamina and joy.** You see these people everywhere you turn at the moment. Once proud and tall, now bent and broken... Grandparents in the summer holidays. It isn't like it used to be when I was a kid. School was out and you stayed at home with Mum. Sometimes you were passed around friends if she had to work, perhaps there was a trip to an aunt's house, but mostly you just stayed home and played with your friends. Now most Mum's work and once you've taken your allocated leave, jiggled your shifts, begged swaps with friends there will be days when you have children at home but you are expected at work. You can't afford a nanny so you call in the family. Hence the frazzled grandparents who appear at attractions, parks and events all through the summer holiday.

It is the devil's own job trying to organise child care for kids in the summer holidays. Out in the county there is a helpful booklet listing all the summer clubs run by leisure centres and others. It's packed with fun things to do like visit the East Midlands Airport open days. In the city we are predictably left to fend for ourselves. You can find clubs that cost £150 a

week or you can find clubs at £40 a week. They are randomly tied to after school provision, the civil service, a few leisure centres, and school clubs. There is no logic to how you will find out about them. A friend might mention one, an e-mail advert might drop into your inbox, you might see a sign up somewhere, but you can pretty much guarantee they won't advertise much and you won't get the information from school or the city council. Nope, in the summer holidays us parents are on our own! We club together and help each other out. I have one friend with a spreadsheet detailing which friends her daughter will be with and which clubs she's at for the entire duration. Or we call in the grandparents and beg for help. They accept with trepidation but they do it anyway and so our kids spend time with the older generation. I'm not for one instant thinking my little one is at Grandma's knee learning how to make her biscuits. I know he is more likely to be at McDonalds for lunch and will get more than his yearly sugar allowance in a week. I also know he is spending quality time teaching Grandma about Nin-jago and Star Wars. It's important she learns these things. I like to think I'm doing her a favour too!

*Helen Knott*



## nelson's soul food

Authentic Homemade Caribbean Soul Food & More...

EAT IN OR  
TAKE AWAY

**TRY OUR**

**TRADITIONAL**

**JERK CHICKEN, FISH & GOAT MEALS  
FROM ONLY £5.00!**

**Outside catering from your  
SOUL FOOD SPECIALIST**

**Sandwiches, Paninis, Jacket Potatoes,  
Burgers, Full English Breakfasts**

**Pre-Order: 07597 419 609**

**Shop Number: 0116 2319 1850**

**250 Narborough Road, Leicester LE3 2AP (Opposite Co-op)**

**Open: Mon-Fri 9-4pm. Thurs & Fri 6-9pm. Sat 9-2.30pm**





# W.E. DAYMAN & SONS

◆ TOOLS ◆ BIRD FOOD ◆ GLASS CUTTING ◆ IRONMONGERY ◆ TIMBERS  
◆ PAINT CUT TO SIZE ◆ ELECTRICAL FIXTURES ◆ PLUMBING ◆ HANDLES  
◆ HOUSEHOLD FITTINGS ◆ BUILDING MATERIALS ◆ DECORATIVE BIRD

## LATEST OFFERS

KEY CUTTING FROM £3 EACH  
(OR 2 FOR £5)

NUTS, BOLTS & SCREWS

SWEEPING BRUSHES

POWER TOOLS

DECORATING RANGE

WORK WEAR & BOOTS

BIRD FEEDERS & FOOD

FENCE PANELS (ALL SIZES)

GARDEN TOOLS AT LOW PRICES

BALSA WOOD - LARGE SELECTION

## NOW IN STOCK!

ORNAMENTAL STONEWARE

GARDEN SOLAR LIGHTS

4 FOR £5.00!

CAMPING STOVES

NOW £12.00! WERE £18.99

FENCE PANELS-ALL SIZES

(FITTING SERVICE)

PROTECTIVE GLOVES FROM £1

**SPECIAL LIMITED OFFER!**

**WHILE STOCKS LAST**

RONSEAL FENCE LIFE

**5LTR £5.00**

(FOREST GREEN & OAK)

• 4Ltr CANS PREM' PARAFFIN

(£6.99 EACH OR £12 FOR 2)

## LOOK OUT FOR

TRADITIONAL LIGHT BULBS

40, 60 & 100W 10 PKS

**ONLY £5.00!**

**NEW!**



LARGE RANGE  
LED LIGHT BULBS

REVAMP OLD FURNITURE

RUST-OLEUM CHALK FINISH PAINT

16 DIFFERENT COLOURS!

**GREAT RANGE OF  
GARDEN TOOLS!**

**WOOD ADHESIVE**

WAS £7.50 NOW ONLY £4.99!

BOSCH ELEC' CHAIN SAWS

£89.99! - WERE £129.99

RYOBI PETROL CHAIN SAWS

£149.99! WERE £189.99

(WHILE STOCKS LAST!)

**MORE GREAT  
DEALS  
IN STORE!**

**GAS UP THE BBQ HERE!**

**DEWALT**

**CALOR**

**Gas**



**0116 262 4970**



**103-105 KING RICHARD'S ROAD, LEICESTER, LE3 5QG**

FREE DELIVERY UP TO 5 MILES!

[www.daymansdiy.co.uk](http://www.daymansdiy.co.uk)

## ROOFING by PAUL TURNER

AND GENERAL BUILDING REPAIRS

Re-roofs  
General Repairs  
Welsh Slating  
Lead Flashing  
Re-ridging



*Over 30 years Experience*

**Tel: 0116 210 14 16**

**M: 07816 851 911**

As Recommended by Knightsbridge Estate Agents



## BUILDING SERVICES

Extensions and Repairs  
Garden Walls and Patios  
Loft Conversions  
General Property Maintenance  
All Building Work Undertaken



**35 YEARS EXPERIENCE**

**T: 0116 243 2868 M: 0779 685 7640**



**25% OFF\***  
FOR NEW CLIENTS

**10% OFF\***  
FOR NUS, NHS & OAPS\*

**Unisex Hair Salon**



**Graduate Stylist Now Available**



w: [evehair.co.uk](http://evehair.co.uk)

93 Upperton Road Leicester

**T: 0116 229 3188**

\*hair only & time limited, t&cs apply, not in conjunction with any other offer.

# Westival Festival

**Braunstone Gate plays host to stacks of entertainment as Westival makes a welcome return for its second outing.**

After last year's success, Westival could now become an annual event held in the heart of the West End incorporating live music, street performers, arts and craft stalls, children's' entertainment and all day food and drink.

Braunstone Gate will be closed to traffic making way for a music stage, a kid's play area and comprehensive market stalls, ranging from vintage clothing to produce. Most of the bars will also be putting on night time entertainment.

Westival is organised by Braunstone Gate businesses but it is funded with £6,000 from the city council's Gateway Improvement Scheme, which aims to develop key arteries into the city, and a £1,000 from the ward community budget.

Westcotes Councillor Sarah Russell said: "It is a festival with a real community atmosphere and lovely to have Braunstone Gate full of people and stalls instead of traffic".

**Westival is a free event taking place on 30th August, Bank Holiday Sunday, between 12 and 6pm. Look for "Westival" on Facebook and Twitter**



**ALL domestic plumbing & heating work undertaken.**

*Call West End*  
**PLUMBING**  
AND HEATING LIMITED

**Boiler Replacements  
System Upgrades  
Boiler Maintenance & Breakdowns  
Full Central Heating  
Domestic Gas Installation & Repairs  
Underfloor Heating  
Bathroom Refits  
All General Plumbing Work**

*"Call us today"*



**OFFICE**

**0116 254 8462**

**MOBILE**

**0771 7477 532**

57 Letchworth Road, Leicester, LE3 0FL

E-mail: [westendplumbingandheating@hotmail.co.uk](mailto:westendplumbingandheating@hotmail.co.uk)



# DMU Square Mile

**Working to connect the university with the community**

**There are scores of free activities for children and adults which give you access to our world-class research and expertise. Hundreds of people living in the west of Leicester have:**

Visited DMU's campus for science and technology events

Enjoyed free choir lessons

Improved their English language skills

Learned to perform comedy

Received help from university medical expertise

Benefitted from world-class research

Enjoyed summer fun days in local parks

Worked with us to create projects to benefit the community

**Don't miss out on these great opportunities and more**

Join our mailing list by emailing us today:

[squaremile@dmu.ac.uk](mailto:squaremile@dmu.ac.uk)

Tel: 0116 257 7135



# DIABETES EXERCISE RESEARCH PROJECT



**We would like to invite you to take part in our diabetes exercise research project.**

Our research involves a combination of cycling and resistance exercises. By using a cardio and resistance exercise program we will be able to assess immunological and physiological parameters in Diabetes mellitus volunteers.

## **What is the purpose of the study?**

As part of the growing research into Diabetes Mellitus the School of Pharmacy at De Montfort University are working to investigate the effects of a combined exercise program (cardio and resistance) on blood glucose, metabolic and immunological parameters that could help you with the management of diabetes and increase your insulin sensitivity. This research involves a combination of two types of exercises and this is where we need your help. We would like to invite you to take part in this study which will help us to understand the role of exercise and how it can help people with diabetes to maintain a healthy body weight, to possibly manage your blood glucose level more effectively and increase insulin sensitivity.

## **What are the possible benefits of taking part?**

As a result of being involved in this study you will receive health and fitness information about yourself including fitness tests and body measurement. You may also witness a decrease in your HbA1c levels and an increase in your insulin sensitivity as well as other general improvements to your health.

If you are interested in the Diabetes Exercise Research Project and would like to volunteer you can come down to De Montfort University and speak to one of the research members in person, located at the **Hawthorn Building, Room HB1.29**.  
Alternatively, please contact Leicester School of Pharmacy:

**T: 0116 250 6220**





# Newfoundpool Forum

**Have your say about what is happening in  
your community!**

**DMU Square Mile is working with residents to establish a forum where people can highlight some of the issues they face in the community and work towards solutions with the help of DMU, Leicester City Council, Leicestershire Police and Leicestershire NHS Partnership.**

**DMU Square Mile will help residents grow ideas and establish projects for the community; with the support of the city council, local NHS and the Police.**

**Anyone wishing to join the forum should contact Square Mile [squaremile@dmu.ac.uk](mailto:squaremile@dmu.ac.uk), or by phone - (0116) 257 7135.**

# Fancy a sing song?

Then join the DMU Square Mile Community Choir!

Rehearsals take place every Thursday from 11am-1pm and the group welcomes anyone with a love of singing.

You do not need any experience to join and it is completely free!

Please contact the DMU Square Mile team for more information:

T: (0116) 257 7135

E: [squaremile@dmu.ac.uk](mailto:squaremile@dmu.ac.uk)

W: [dmu.ac.uk/dmusquaremile](http://dmu.ac.uk/dmusquaremile)







# WHAT'S ON *at*

## WOODGATE RESOURCES CENTRE



### Music Lessons for Children

For five to seventeen year olds. Guitar, Keyboard, Violin, Flute, Clarinet, Recorder, Trumpet, Cornet, Harmonica, Drums, Tabla, Singing and Music Theory. Lessons in groups. Various times depending on instrument, ability and numbers. £35.00 for a twelve week term.

### Childrens' Music Taster Day

Saturday 3<sup>rd</sup> October from 10.00am to 1.00pm. It is hoped that most of the above instruments will be available if sufficient interest. Ages five to seventeen. Must ring or e-mail to book. Free entry.

### Music for Under Fives

One and two year olds – Wednesdays, 9.30 – 11.00am Under eighteen months - Thursdays 2.00 – 3.30pm. Eighteen months to four - Fridays 2.30 – 4.00pm. All cost £3.00 per session. £1.50 for a second child with same parent. First lesson free. Suggest ring first.

### Singing for Adults

Fridays 6.30 – 7.30pm. Cost £5.00 for twenty minutes. Cheaper for groups. Phone 07905533341 for more details.

### Multi-Instrument Band

Tuesdays 7.00 – 8.00pm. Cost £2.00 per session (£1.00 under eighteens). Also Trumpet/Cornet lessons available. Ring 07866378392 for more details.

### Senior Citizens Lunch Club

Mondays and Thursdays, 12.30pm. Cost £2.50 for two course meal plus tea/coffee.

### Senior Citizens Club

Mondays 2.00 – 4.00pm. Cost £1.00.

### Senior Citizens Keep Fit

Thursdays 11.00am – Noon. Cost 60p.

### Fosse Lunch Club

Fridays 12.30pm. Cost 70p for main course plus tea/coffee. Run by Zinithiya Trust and funded by the Riverside Housing Association. All welcome.

### Our Co-op Friendship Group

Tuesdays 10.00am – Noon. Cost £1.00. Learn craft skills and make new friends.

### Yoga

Mondays 6.00 – 7.15pm and 7.30pm – 8.45pm. £4.00 per session, unwaged £3.50. Must book in advance.

### Computer Classes

Wednesdays. 1.45 – 2.45 pm and 2.45 – 3.45pm. 60p per session. Contact Centre for further details or to book.

### Tetsudo

Martial Arts. Sundays 11.00am – 1.00pm. Cost Adults. £4.00, Under 12s £2.50. Ring 01509 260875 for more info.

### Narcotics Anonymous

Tuesdays 7.30 – 9.00pm. Ring NA helpline 0207 7300009 and ask for Woodgate – Leicester meeting.

### Abbey Social Club

Monthly second Wednesday of month. 1.45 – 3.45pm. Members 75p, Non-Members £1.00.

### The Centre is also Available for Bookings

There are three rooms. The main room is particularly suitable for childrens' parties and other family events. The smaller rooms are ideal for meetings, small training events or teaching musical instruments. **Contact Centre for rates and availability or visit our website.**

For further information contact the Woodgate Residents Association, Woodgate Resources Centre, 36 Woodgate, Leicester LE3 5GE Tel. 253 0717 e: woodgateresidents@hotmail.com

Please visit our new website. [www.woodgate.org.uk](http://www.woodgate.org.uk)

(The Youth Music Programme by Youth Music)

The Woodgate Resources Centre is funded by Leicester City Council



# SIR CHARLES NAPIER UNDER NEW MANAGEMENT

**Allen & Staff  
Welcomes Customers  
Old & New**

- Regular Entertainment Fri & Sat
- Quizzes Tues & Sun
- Darts, Skittles & Dominos
- Now Taking Party Bookings

**OPEN LATE WEEKENDS!  
OFFERS AVAILABLE!**



Find us on  
Facebook

Your Community Pub

**0116 262 2633**



Follow us on  
twitter

**Glenfield Road, Leicester, LE3 6AR**

## Western Park Piano Services

**8 Meadhurst Road**

**Leicester, LE3 6FQ**

**0116 291 4792**

**07881 977 266**

**Piano Tuning  
Piano Repair**

Call Douglas Cornford  
Distance no object

# MDL

## HANDYMAN SERVICES

Gardening, General Repairs, Electrics, Locks,  
Plumbing, CRB Checked, 30 Years Experience

**CALL MICK**

**07407 658 160**

E: mdlhandymanservices@gmail.com

# Beer O'clock!

The first ever Western Park Beer Festival will take place on Friday 11th & Saturday 12th September 2015 at St. Anne's Church Hall, AKA 'Tin Annie' on Letchworth

Road, Leicester. Tapping into the nation's love of real ale and craft beer, this charitable event is looking to raise in excess of £5,000 to contribute to the 'Tin Annie' Fund-raiser appeal.



The festival promises to offer a wide variety of locally sourced food and drink – providing a lovingly curated line-up of over 20 real ales, craft beers, ciders and perrys and hearty range of locally sourced bar food. On the Saturday afternoon and evening, The West End's famous 'Flamin' Mo', the resident Pizzaiolo of The Western pub, will be on hand to satisfy the crowd with his delicious hand made fresh pizzas.



On Saturday 12th September there is a special family afternoon session with a good selection of children's activities including a bouncy castle, face painter, free ice cream for children and competitions for the young ones.

Entry will be £5 per session including a free festival half pint glass.

Ales will be £1.50 per ½ pint and £3.00 per pint and debit/credit cards will be accepted for both entry and beer token purchases.

Everards have agreed to support the Festival as a key sponsor, alongside a range of local businesses who will sponsor the beers.

Sponsorship opportunities are selling fast, but some are still available; so if you have a local business and wish to get involved with such a fantastic local community event, please contact us at [info@westernparkbeerfestival.org](mailto:info@westernparkbeerfestival.org)

Visit [www.westernparkbeerfestival.org](http://www.westernparkbeerfestival.org) or Twitter @WesternParkLeic and Facebook [www.facebook.com/westernparkbeerfestival](http://www.facebook.com/westernparkbeerfestival)

(Sponsored Article)





# torrwaterfield

ACCOUNTANTS

**Accountancy**  
**Audit**  
**Sage Training**  
**Tax Advice**  
**Payroll**  
**VAT Returns**  
**Bookkeeping**  
**Business Start-Ups**  
**Business Development**

**FREE No-Obligation Meeting**

**ACCA**



**0800 652 1614**  
**FREE ADVICE LINE**

**[www.torrwaterfield.co.uk](http://www.torrwaterfield.co.uk)**  
**[info@torrwaterfield.co.uk](mailto:info@torrwaterfield.co.uk)**

Park House, 37 Clarence Street, Leicester LE1 3RW

T: 0116 291 2807

Registered Osteopath  
**Backsetc**

OPEN

Wed-Fri: 8.30am - 6.00pm

Sat: 10.00am - 5pm

Osteopathy is a Whole Body Treatment

www.backs-etc.co.uk

2 Meadhurst Road, Leicester, LE3 6QF

Many conditions can be relieved or benefit from Osteopathic Treatment

Sciatica  
Arthritis  
Whiplash  
Headaches  
Back Pains  
Sports Injuries  
Postural Strain

**DON'T MOVE  
IMPROVE!**

PROPERTY REPAIRS AND UPGRADES

**DAVE HORNBY**

Enhanced C.R.B. Checked

**Kitchen Design & Fitting, Windows, Doors  
& Bathrooms, Plumbing, Wiring  
CALL-OUT SERVICE**

T: 0116 285 7288 M: 07921 555415

e: workdone@msn.com

**SD PLASTERING & TILING**

All Aspects of Plastering and Tiling  
Domestic, Commercial & Insurance

**FREE ESTIMATES**



T: 0116 348 3354 M: 0771 353 1096

e: contact@sd-plasteringandtiling.com

www.sd-plasteringandtiling.com

**corzac**

**Roofing Services**

15 YEARS

EXPERIENCE

Repairs  
Re-slating  
Re-tiling  
Guttering  
Lead Work

**FREE  
NO OBLIGATION  
QUOTATION**

With up to



10 Years Guarantee

Guttering install & Repair  
Chimney Renovations  
Fascias and Soffits  
Brick Re-pointing  
And Much More....

T: 0116 2223 883

M: 07855 251 998

www.corzacroofingservices.co.uk



**Letter Box**



May I, through your magazine, express my gratitude to all those who organise the Western Park festival?

This is a wonderful, annual family friendly event featuring a range of activities and showcasing a large number of live bands and other musical acts. The stalls, food outlets and beer tent all add to the atmosphere. It is so nice to see so many local people walking to and from Western Park for this event every year. It makes for a very pleasant community event, especially when the weather is kind, as it was this year.

I am already looking forward to the 2016 festival!

*Stephen Foster Wyngate Drive*

I read in the August Gazette that flowers were stolen out of their pots next to the Hinckley Road shops.

It is not always the most attractive place to shop these days but the flowers made it less drab and a little more friendly.

How typical of some to ruin the efforts of others but I do hope the shopkeepers who organised the displays do not give up. *Katherine Western*

**WD The Wright Decorators**

**Steve Wright**

**Local Decorator**

**25 years Experience**

**All Work Guaranteed**



For all your interior and exterior decorating needs

**Call 0116 2241 959 M: 07810 810 291**

e: thewrightdecorators@hotmail.co.uk

49 Lindfield Road Leicester LE3 6HL

Don't let your house suffer from rotting eaves & peeling paintwork when you can have maintenance free replacement fascia, soffits, guttering & dry verge caps

**SL PLASTICS & PVCU**

**We are a father & son business with over 15 years experience**

For a **FREE NO OBLIGATION** quote call Sam

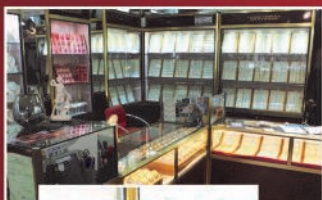
**Freephone - 0800 1910 638**

**Mobile - 0788 7702 755**



# ARTI JEWELLERS

Est 1984



**Gold Bought For Cash  
Competitive Prices!  
Expert Service!  
Top Quality!**

- Silver Jewellery
- Jewellery Repairs
- Ear & Nose Piercing
- 22ct Gold & White Gold
- Diamond & Platinum Rings



## Tel: 0116 254 5091

[www.artijewellers.com](http://www.artijewellers.com)

65 NARBOROUGH RD, LEICESTER LE3 0LE

# Plumbing & Heating

**RUDKIN &  
HERBERT LTD**

Est. 1992

- All plumbing work undertaken
- Full heating systems
- High efficiency condensing boilers
- Boiler replacement
- System upgrades & flushing
- Landlord certificates
- Registered solar hot water installers
- Under floor heating systems
- Bathrooms, wetrooms & showers
- Registered solar PV system installers
- 7 year guarantee on all boiler installations

**NOW  
OPEN**

**BATHROOM  
& RENEWABLES  
SHOWROOM**



**£60 BOILER SERVICE - WITH THIS ADVERT**

[www.rudkinandherbert.co.uk](http://www.rudkinandherbert.co.uk)

## LEICESTER 0116 202 9775

HEAD OFFICE : 80 UPPERTON ROAD, LEICESTER, LE3 0HB



## ASPEN PROPERTY MAINTENANCE



Boilers  
Plumbing  
Breakdowns & Repairs  
Central Heating  
Gas Appliance Servicing  
Radiator Upgrades  
Kitchen & Bathroom Installs



**Contact: Wesley**

email: [apm@engineer.com](mailto:apm@engineer.com)



Tel: (0116) 229 5161 / 07867 873602

## VFR Motor Services Ltd

**Servicing - Diagnostics - Repairs**

**Clutch & Timing Belt Specialists**

**USED CAR SALES COMING SOON!**

Tel: **0116 319 0118 / 07850 881 911**

Shaftsbury Road Leicester LE3 0QN

e: [justin@vfrmotorsltd.co.uk](mailto:justin@vfrmotorsltd.co.uk)

Want to Pay Less Tax or Starting Out in Business?  
Need a Pro-active Accountant?  
Struggling with your Tax Return?  
**LET US HELP**

**K KIRT & CO**  
ACCOUNTANTS

ACCOUNTING TAX & BUSINESS ADVICE  
Friendly and Professional Local Service

**0116 285 2694**

60 Hinkley Road Leicester LE3 0RB

e: [info@kirt-accountants.co.uk](mailto:info@kirt-accountants.co.uk)

[www.kirt-accountants.co.uk](http://www.kirt-accountants.co.uk)



**OVENCLEAN**  
The original oven cleaning specialists

Ovens, Extractors,  
Microwaves & BBQs  
Expertly Cleaned



**£5 OFF!**  
QUOTE THIS ADVERT!  
\*For a full oven clean  
only from the Ovensclean specialist

Put the sparkle back into your oven

**Call Neville on 07948 622 379**

[www.ovenclean.com](http://www.ovenclean.com)

## August Police Update

**SHARK WATCH with Sgt. Kev Sharkey**

This month anti-social behaviour problems have affected residents on Ivanhoe Street and Henton Road. In both cases residents contacted us raising concerns over the behaviour of the tenants and how this had impacted on the rest of the street. In both cases officers visited the persons involved and gave proportionate warnings designed to curb the behaviour, however, this advice was not heeded and so we then worked closely with both the housing providers and the Leicester Anti Social Behaviour Unit, in each case to issue warning letters to the residents. Sadly, the behaviour persisted and so proceedings continued and now the tenants of Ivanhoe Street have been evicted and the tenant on Henton Road will be evicted shortly. We will always try to resolve such matters in a simple and pragmatic manner, but if tenants refuse to engage then we will act to remove a problem that is effecting the rest of the community.

A new tactic is being used against motorbikes that are ridden dangerously and anti-socially on the roads and public parks, in particular Western Park. Operation Groundhopper deploys specialist evidence gathering officers using high tech camera equipment to help identify those responsible. A 17yr old male has now been charged with dangerous driving and assault following a collision with an officer who was trying to arrest him. We continue to combat this problem and make the park a safer place to enjoy. I urge residents to tell us who these people are and where they store their vehicles. You can speak to an officer by **calling 101, or anonymously on Crimestoppers 0800 555 111.**

We are still seeing higher levels of car break-ins and it is often for very minor property being left on show. We are working to combat this problem but you can lower your chances of becoming a victim by following some simple steps. Small change, in particular, is being taken so please do not leave anything of value on show. It may only be change to you, but to offenders it is worth taking and you will end up replacing windows or locks which costs a lot more. If you cannot park inside a locked garage, try to park in a well-lit place with an alarm deterrent; ensure doors and windows are locked and that nothing of value is on display. Sucker marks on windscreens should be wiped off. It tells thieves that a satnav could be in the glove box and they will break in just to have a look.



## Tony Huxley's Compost Corner



The Apiaceae family is packed with many attractive ornamental and wild plant species, vegetables and herbs such as celery, parsley, fennel, parsnip and carrot. But every family has its black sheep, and Apiaceae have several. This hasn't gone unnoticed by the press who love an annual "plant gone bad" article. Last year it was hemlock, the plant of classical poisoners.

This year the tabloids have gone for a true Triffid, the giant hogweed. Depending which article you read, this plant will reach 3 to 6 metres tall. It's like cow parsley on steroids - with lots of attitude. It's the baddie from Rocky 4 - in plant form. And like that Apollo Creed-slaying villain, it's also of Russian origin (which makes it even more tabloid friendly).

Like many of today's invasive plant species we can blame our Victorian ancestors for bringing this Killer Carrot to our shores. But unlike Japanese Knotweed and Himalayan Balsam this literally has a sting in the tail. The sap causes burns and hor-

rific blisters by making the skin sensitive to sunlight, an effect that can last for months and even years. This reaction is even more potent to children.

As this plant continues to spread, injuries will become more frequent. So beware of unusually tall plants topped with large clusters of small white flowers. Straight green stems are brittle and ridged with red spots. Leaves are lobed with a toothed edge and up to a metre long. They respond well to glyphosate weedkillers, but al-

ways wear rubber gloves and protective clothing if you intend to tackle one of these brutes. It's best to burn on site any parts you remove, especially the seed heads, one plant can produce up to 100,000 seeds, and tipping requires a written permission as it's considered hazardous waste.

But don't have nightmares, the Russians aren't coming...they're already here!!!



Giant Hogweed  
Size Comparison

# Martin Page

## YOUR LOCAL TREE SURGEON

- Are your trees too tall, blocking light or untidy?
- Do your hedges, conifers or shrubs need trimming?
- Would you like to remove that stubborn stump?

*With 30 years of working in your area, I would be pleased to give you free advice and a free quotation*

Call me now on **0116 250 5848**

[www.charnwoodtrees.com](http://www.charnwoodtrees.com)

*Constantly  
Recommended!*

**I ALSO SELL...**  
high quality  
firewood logs

# mick & den

The House Clearance Men

Established Over 35 Years

**TOP PRICES PAID**

**CONFIDENTIAL SERVICE**

**DISCREET AND EFFICIENT**

**HOUSE CLEARANCE & CLEAN**

**SINGLE ITEMS PURCHASED**

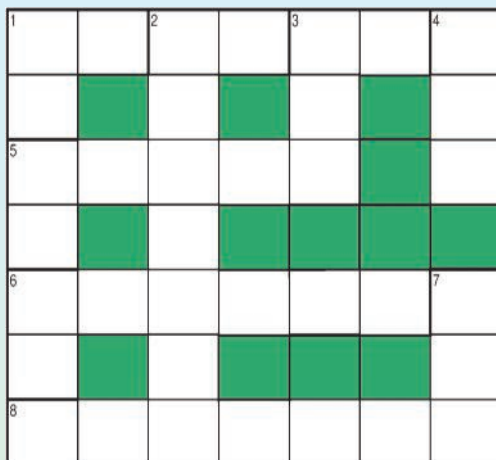
**SEE MORE at**  
[www.mickanddens.co.uk](http://www.mickanddens.co.uk)

**T: 0116 233 8828**  
**M: 07710 025 109**

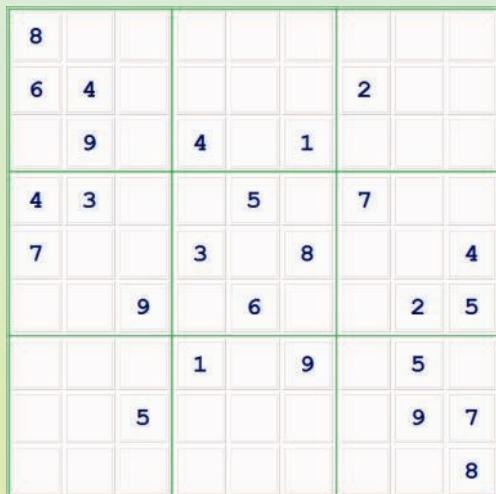
**63 King Richard's Road**  
**Leicester LE3 5QG**

*"Your first stop for full, part  
house, garage or loft  
clearance, distribution of  
estate or simply downsizing"*

## BRAIN *TAZERS*



**1 across.** Vacation **1 down.** Boat berth **2.** Ice treats **3.** Seventh of a week **4.** Not no **5.** Motor gathering **6.** It's what I think **7.** Show approval **8.** Tight rose.  
© Paul Towers



- 1. Sir Curd A Jowls** is an anagram of which summer 2015 blockbuster movie?
  - Solve this rebus puzzle: **MananMan.**
  - Without using any safety device, how can a child leap out of a 30 storey building and easily survive?
  - Find 3 seven letter words beginning with 'c' and ending in 'tic'.
  - Replace the vowels to reveal 4 animals. Lnss, Tgr, Grll, CrcI
  - What comes next: **8723, 3872, 2387** —?
- Answers at [www.westernparkgazette.co.uk](http://www.westernparkgazette.co.uk)



# UPSTAIRS AT THE WESTERN

Leicester's Pub Theatre

Autumn 2015

"Friendly, intimate venue"

"A gem of a venue"

Audience Members



Cathy Tyson in *She Called Me Mother*, Sat 17 Oct

Show information  
& tickets available  
More at @UpstairsWestern   
[www.upstairsatthewestern.com](http://www.upstairsatthewestern.com)

Upstairs at the Western  
The Western  
70 Western Road  
Leicester, LE3 0GA

THE CARPET  
**CAVERN**  
LEICESTER

**Free Estimates & Free Measuring**  
Quality Carpets Laminates & Vinyls

**15% OFF\***  
**ALL FLOORING\***  
**MORE GREAT BARGAINS**  
**IN STORE**  
**0116 255 4335**

[www.thecarpetcavern.co.uk](http://www.thecarpetcavern.co.uk)  
[info@thecarpetcavern.co.uk](mailto:info@thecarpetcavern.co.uk)

25 Nevanthon Road, Leicester, LE3 6DR

\* Terms & Conditions apply.  
Time limited & not in conjunction with any other offer

# EYES RIGHT

## OPTICIANS



**HALF PRICE**  
**PRESCRIPTION SUNGLASSES**

**FREE** EYE TEST  
conditions apply

245 Narborough Rd, Leicester, LE3 2QR. Tel: 01162 823999  
[www.eyesrightopticians.co.uk](http://www.eyesrightopticians.co.uk)

# WOODGATE COMPUTERS

One call that's all! Computer services you can depend on!



- APPLE MAC REPAIR
- LAPTOP REPAIR
- PC REPAIR
- DATA RECOVERY
- MOBILE PHONE REPAIR
- GAME CONSOLE REPAIR
- CCTV
- NETWORKING
- HOME & BUSINESS SERVICES



Independent Repair Centre for



WOODGATE COMPUTERS  
70, WOODGATE  
LEICESTER LE3 5GG

PHONE 0116 262 3999  
FREEPHONE 0800 644 0686  
MOBILE 0791 337 2633

[www.woodgatecomputers.com](http://www.woodgatecomputers.com)

