



WESTERN PARK FESTIVAL!



More on Page 16

KOBELLA HAIR



T: 0116 251 6476



*ts & cs apply

176, Fosse Rd North, Leicester, LE3 5ES

ROOFING by PAUL TURNER

AND GENERAL BUILDING REPAIRS

Re-roofs

General Repairs

Welsh Slating

Lead Flashing

Re-ridging

Over 30 years Experience

Tel: 0116 210 14 16

M: 07816 851 911

As Recommended by Knightsbridge Estate Agents



Painting and Decorating

A.W. NOTMAN
Est. 1982



Interior and Exterior

Domestic & Commercial Work, Insurance Quotes Welcome

Tel: 0116 2854 160 Mobile: 0776 822 0793

e:awndecor@yahoo.co.uk

www.a-w-notman-painting-and-decorating.co.uk

87 Nevanthon Road Leicester LE3 6DR

A.J.S Architectural Services

Building Plans for

**EXTENSIONS - LOFT CONVERSIONS
STRUCTURAL ALTERATIONS**

From initial design right through to Planning
Permission and Building Regulations approval.
We take care of all the details, liaising with the local
authorities on your behalf.

CALL FOR YOUR FREE CONSULTATION

T: 0116 254 9576

M: 07788 416 806

M: 07974 263 607

E: ajs-architectural@hotmail.co.uk



A.J.S Architectural Services

24 Wentworth Road, Leicester, LE3 9DF

Over 20 Years Experience

Expert Advice, Reliability and Quality

Hello From The Editor

Welcome to the July edition of the Western Park Gazette.

And this month, the fifth Western Park Festival battled rain and wind to be another glorious success even if the main stage did almost blow away. We went along too, drank beer and took a few photos. It's a hard job but we're up to it.

The really big story is the council's proposals to sell off the buildings on Western Park for development. It has put local noses out of joint and a war party has been formed to fight it. We'll follow the story closely as it unfolds over the coming months.

We preview the Western Park Beer Festival, football murals start appearing across the West End and we have the Square Mile Project's latest update. There's Roger Blackmore on the Book of Margery Kempe, Helen Knott on diets, Sgt Andy Stevens on crime and Tony Huxley on thistles and artichokes.

Finally, the Sudoku and crossword lie in wait on the inside back page.

Follow us on Twitter @mygazette & Facebook by searching for the Western Park Gazette.

If you've got a local news story then email:

editor@westernparkgazette.co.uk

Visit www.westernparkgazette.co.uk

Just So You Know....

- Content in this magazine may not reflect the beliefs or opinions of the publisher.
- The copyright of all text and advertisements designed or authored by The Western Park Gazette and its officers, remains with the publisher at all times.
- If you're supplying under copyright artwork or articles, Rapsallion Media assumes you have the right to do so.
- All advertising copy you supply must be accurate, truthful and be ASA compliant.
- You need our permission to reproduce any part of this magazine or associated website content.
- We are not responsible for transactions between Gazette advertisers and their clients.
- We don't accept liability for loss or damage as a result of omissions or errors once content is submitted.
- We don't print editorial endorsements of products or services. Full terms and conditions are on line.
- All content is published in good faith.
- **Copy Deadline August 4th 2016**

To Contact - Call 07939 115 724

e:editor@westernparkgazette.co.uk

e:sales@westernparkgazette.co.uk

Published by Rapsallion Media
62 Ainsdale Rd
Leicester LE3 0UA

Printed by Flexpress Ltd
6 Coal Cart Road, Interchange,
Birstall, Leicester, LE4 3YB



Events Diary

Fosse Singers: Fosse N'hood Centre. Weds. 7pm.

Peter Crebbin's Cool Swing Band: 1st Sun Monthly. Café Chino at Hilton Hotel, Meridian. 1-3.30pm

Thursday Club: Thursdays. 2-4pm. Robert Hall, 147 Narborough Rd.

West End Pay As You Feel Café: Thurs 7-8.30pm. Fri & Sat 11-3pm. West End Centre. Andrewes St.

Heritage Sundays: Monthly last Sun. Mediaeval city open days/tours. 11-3pm. goleicestershire.com

Westfield Gallery: Mon-Sat. 81 Westfield Rd. Call 0116 285 8548 to view.

Fearless Foxes: Ongoing. New Walk Mus. Free.

Story City Festival: Until 23rd July. Various locations. Visit: www.storycity.co.uk

Simon Says: 23/24 July. De Montfort Hall.

Free Big Family Fun Days: 26th July, Fosse Lib. 1st Aug. Westcotes Lib. New Parks Lib on 4th, Brite Centre on 11th. 11-3pm. All Free.

Teddy Bears Picnic: 27 July. Belgrave Hall. 11-4pm.

Open Day/Produce Sale: 6th Aug. Groby Rd Allotments. 10-2.30pm. Entrance Gate B on Groby Road.

A Boy, A Bear & a Boat: 6 Aug. Brite Centre. 3pm. Booking essential.

Leic Oktoberfest: 17-21 Aug. Abbey Pk. 4-11pm.

Western Park Beer Festival: 19-20th Aug. Dove-lands Sch. westernparkbeerfestival.org

City Festival: 19-29th August. Various events & venues. Info at: www.visitleicester.info/cityfestival

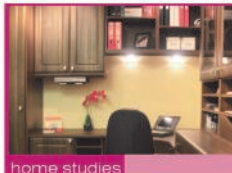
Email your event to: editor@westernparkgazette.co.uk

Holmfields

BUILT IN QUALITY



kitchens



home studies



bedrooms

Your Local Family Run Business

Fitted Kitchens, Bedrooms & Studies • Design & Planning
Installation Services Including Building Work

Holmfields Showroom 17 Carlisle Street Leicester LE3 6AH
T: 0116 255 6669 F: 0116 255 6668 E: support@holmfields.co.uk

www.holmfields.co.uk

A. BELL AUTO'S

Where Service is Important

MOT's, Service & Mechanical Work
On Cars & Light Vans

- Fault Diagnostic ●
- Brakes Relined ●
- VW Specialist ●
- Body Work ●
- Valeting ●
- Alloy Wheel Referbs ●

Est: 1984

Selection of Quality Used Cars

MOT & Service Only **£90**

Bolton Road, Leicester LE3 6AE

Tel: 07814 988 467

www.abellautosLeicester.com



OPEN

FOSSE TAXIS

24-7 SERVICE
AIRPORT PRICES

Other Airport & Seaport Prices Upon Request

LOCAL, CLEAN & MODERN VEHICLES TO:

	CAR	5 to 8 SEATER
East Midlands	£22	£33
Birmingham	£38	£50
Luton	£70	£99
Heathrow	£90	£125
Stansted	£90	£125
Manchester	£90	£125
Gatwick	£110	£160

MINIMUM FARE £3.50 FREE CALL/TEXT BACK

0116 232 22 22

www.fossetaxis.co.uk

PARK PLAN SPARKS OUTRAGE

Leicester City Council have unknowingly poked a sleeping dragon in the eye after local people discovered a plan to sell off part of Western Park for building projects.

Leicester City Council has offered two sites on Western Park for sale for residential development.

Over five acres of land has been put up for sale in two lots which include the former Eco House, the Mencap Constance Jackson Centre, the old Environ offices, the car park and the Western Park Open School site.

The sale documents on the council's website indicate they would prefer a residential developer to take on both sites using the Hinckley Road site as a sweetener for redeveloping the Grade II listed school.

None of the groups who use the park, like Leicester Freeriders or Friends of Western Park were told of the plans, so local residents and park users have formed an action group to try and stop the sale of the site. One of the objectors said: "The first thing residents and park users knew about the sale was when the documents appeared online. It's outrageous that local people have not been consulted and quite sneaky of the council".

The deadline for expressions of interest in the two sites is 2pm on August 5th.

You can find the protest group on Facebook at Save OUR Park Buildings - Western Park



Woodgate Eye Centre & Wyvern Optical



*** SUN SPECS
SPECIAL OFFERS!**

ANOTHER GREAT OFFER!
KODAK FRAME & TRANSITION LENS
Complete **Kodak** Designer Frame
& Varifocal Transition Lenses
***FROM ONLY £209.00**

*offer expires 30.9.16

CALL US FOR: NHS & Private Testing • NHS VOUCHERS
Accepted • **FREE** Sight Tests for Under 16's • Outside
Prescriptions Welcome • Wide Range of Designer Frames
• Lens Replacement Service • Fast & Efficient Repairs
• Glasses Made On-site • Great Value Frames
• Contact Lenses

COMPLETE SINGLE VISION SUN SPECS FROM ONLY £34.00

Radley frames + lenses from £49.95 Other designer frames, inc Ray-Ban, available

87 Narborough Road Leicester LE3 0LF

Tel: 0116 2241 767

Open: Mon-Fri 8.00am-6.00pm



Est 1948



*Is & cs apply. Cannot be used with another offer. Offers expire 31.08.16



**SPECIAL
OPEN DAY
OFFERS!**



Hearing information day

Friday 29th July at:
Hear 4U Hinckley Road

Visit us on our hearing information days for:

- Demonstrations of the latest premium hearing technology
- The chance to meet a hearing aid specialist from leading manufacturer, ReSound

Open Day Offer!

**Top of the range hearing
technology for £2,500!***

*** SPECIAL OFFER
DON'T MISS OUT!
HALF PRICE
WAX REMOVAL**

**To book your place call:
0116 262 3279**

* Valid on presentation of this advert when booked before 31.08.16

ReSound LiNX²™

ReSound LiNX² is the latest Smart Hearing[™] aid from leading manufacturer GN ReSound. Wearing them you can:

- Easily follow conversations
- Maintain a clear sense of your surroundings
- Stream sound directly from your phone, TV and more

All in a robust design, so small you won't notice you're wearing them.

**Open
Day Offer!**
20% off a pair of
ReSound LiNX²
hearing aids*



Discreet on the ear.

resound.com



ReSound

227 Hinckley Road, Leicester, LE3 0TG

Tel: 0116 262 3279

MARGERY KEMPE

Margery Kempe was a truly remarkable woman. The daughter of a parliamentarian, she was born in Kings Lynn in 1373. She bore 14 children, travelled all over the world and became the author of the first female autobiography in the English language.

In addition to undertaking a pilgrimage to Jerusalem, breaking her journey in Venice on the way, this remarkable woman also visited Germany, Spain, Rome and many other places in both Europe and around Britain.

The description of her visit to Leicester reads like a period drama. When she arrived, the Mayor of Leicester was not well pleased. He called her "A false strumpet, a false Lollard and a deceiver of the people." He then promptly told her that he was sending her to prison. Despite Margery protesting that she was a respectable woman and that her father had been five times Mayor of Kings Lynn, the Mayor of Leicester would have none of it. She was only saved by the city jailer taking pity on her and putting her up in his own house by Leicester prison.

Margery's visit to Leicester had by this time caused a considerable stir. As a result she was taken to All Hallows church and questioned by the Abbot of Leicester and various other civic and

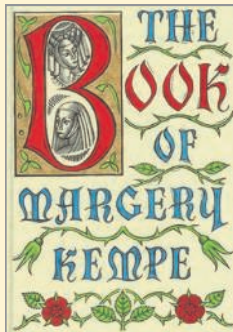
religious leaders. After much interrogation and heated discussion, Margery Kempe was eventually passed on to the jurisdiction of the Bishop of Lincoln. There is no record that she ever visited Leicester again.

We know a lot about this story because Margery wrote a Book. It is thought she was illiterate and dictated her tale to a scribe. The book portrays her travels and her life as a mystic - although it should be realized that Christian mysticism was quite common in the Middle Ages and she was also a contemporary of the famous mystic, Julian of Norwich.

Her book also tells us a great deal about the Leicester of those times with divisions between the orthodox institutions and the Lollards who were somewhat influential in the area. Only one copy survives and is housed in the British Museum.

Margery was no doubt relieved to be leaving the city and the Mayor was equally delighted to see her go.

Roger Blackmore





BUILDING SERVICES

Extensions and Repairs
Garden Walls and Patios
Loft Conversions
General Property Maintenance
All Building Work Undertaken

35 YEARS EXPERIENCE

T: 0116 243 2868 M: 0779 685 7640



THE WRIGHT DECORATORS



Steve Wright
Local Decorator
30 years Experience
All Work Guaranteed

For all your interior and exterior decorating needs

Call 0116 2241 959 M: 07810 810 291
e: thewrightdecorators@hotmail.co.uk
49 Lindfield Road Leicester LE3 6HL






DA LANDSCAPES

SLABBING • GRAVELLING • FENCING • TURFING
• GARDENS CLEARED
• TREES/HEDGES CUT & REMOVED

OAP DISCOUNTS!

0116 233 0007
07909 724 435



The original oven cleaning specialists

Ovens, Extractors,
Microwaves & BBQs
Expertly Cleaned



£5 OFF!*

QUOTE THIS ADVERT!
*For a full oven clean only from this Ovenclean specialist

Put the sparkle back into your oven

Call Neville on 07948 622 379
www.ovenclean.com

Shepherds Bathrooms

73 Hinckley Road Leicester LE3 0TD



cleargreen BATHROOMS Burlington *Bathrooms & showers designed to last* BRITTON BATHROOMS aqua CABINETS clearwater BATHS Zamor

Superb Bathroom Supplies and Installation
Fitted by Qualified and Time Served Experts
Huge Range to Fit Any Budget
Extensive Showroom

Ring us for more information or call into our showroom

0116 255 4351

Est. 1925

www.shepherdsbathrooms.com

Open Monday-Saturday



The kids' have broken up from school. The passport is up to date, the tickets bought and the luggage is packed along with your extra large leopard print thong and mankini set. Basically, if you've got it - flaunt it on the beach... or not!

KNOTT'S LANDING

Summer is here so of course I've been on a diet so my body can be 'beach ready'. Most of the time beach ready means I'm on the beach and my body is ready to do stuff but sometimes you need to take a step back and accept that your bum is spreading further than you would like.

As luck would have it, I've started playing netball and as part of that I got referred to a certain well known weight management company for FREE!

Free is my favourite four letter word. So once a week I trip off up the hill to stand on a set of scales and see if I've managed to dodge enough cake to make a difference. You would be amazed how much cake dodging I've had to do. I don't work in an office where there's the ubiquitous birthday cake round at least once a week but I still seem to



have quite a few people who I only see around a mound of eggs, flour, butter and sugar in baked form.

It's been relatively successful so far. I'm definitely smaller than I was and yes indeed, my clothes fit better. I'm not sure I'm ever going to have the sort of beach body that will go on a poster but it will please me immensely to not get mistaken for a seal in the water. You can probably tell I don't take this very seriously. If it works, great, but if not, I have a great family, a lovely home and holidays on the beach, so life is good anyway.

A good indicator of my commitment can be seen by the fact that I turned up to one meeting the worse the wear from drink! I can highly recommend it. Put on a few pounds? NO problem, you've had four glasses of prosecco! Lost a few pounds, hurrah! Have another glass of prosecco! I blame my friend who encouraged me to have a quick glass in the afternoon, which led to another one and by then, sweetie darling... I couldn't have given a damn!

Helen Knott



CONFIDENTIAL HOUSE CLEARANCE



- Single items or complete houses
- Same day call out - prompt & efficient

ALL HOUSEHOLD ITEMS RECYCLED
(0116) 233 8828
Eve: 0116 287 8500 Mob: 07710 025 109

mick&den

www.mickanddens.co.uk

Visit our new online furniture site www.mdfurnitureland.co.uk

DAYMANS

www.daymansdiy.co.uk

LATEST OFFERS

KEY CUTTING FROM £3 EACH
NUTS, BOLTS & SCREWS
SWEEPING BRUSHES
ROOFING FELT
DECORATING RANGE
WORK WEAR & BOOTS
GARDEN & POWER TOOLS
FENCE PANELS (ALL SIZES)
HEAVY DUTY CHICKEN WIRE
BIRD FEEDERS, TABLES & FOOD
BALSA WOOD - LARGE SELECTION
ELECTRICAL CABLE OFF THE REEL
DRAFT EXCLUDERS/FILM GLAZE
GARDEN INCINERATORS
WERE £29.99 NOW £19.99

FAN-TASTIC DEALS!

KEEP COOL THIS SUMMER!

New selection of floor
standing & portable
electric fans from only:
£8.99 to £45.00!



LAST IN STOCK

TRADITIONAL LIGHT BULBS
40, 60 & 100W 10 PACK

ONLY £5.00!

150W LIGHTBULBS
WHILE STOCKS LAST!
CLEAR 100W 4 PACK
WAS £1.99 NOW £1.50!

LARGE RANGE OF LED BULBS
INC. GOLF BALL

NEW STOCK

LRG BAGS COMPOST £6.99
OR 2 FOR £12.00

GROWBAGS £2.99 EACH
FARM YARD MANURE
50L £4.99

24L TOPSOIL: £3.99

NOW IN CROWN PAINT

WHITE/MAGNOLIA
MATT VINYL EMULSION
7.5L ONLY £14.99
OR 2 FOR £25!



GAS UP THE BBQ HERE!

DEWALT

CALOR Gas

**FREE DELIVERY
UP TO 5 MILES!**



0116 262 4970
103 -105 King Richard's Road, Leicester, LE3 5QG

Make a Splash!

In The Western Park Gazette

07939 115 724

esales@westernparkgazette.co.uk



Foot Health Care



DO YOUR FEET NEED SOME SPECIAL CARE?

Ingrowing Toe Nails, Thickened Nails, Fungal & Athletes Foot, Verrucas, Nail Trimming, Corns, Calluses, Diabetes, Cracked Heels, Toenail Reconstruction, Medi pedi

MICHELLE BRETT

DipCFHP MPSPract

For Home Visits Call 07983 401 247

Clinic Appointments: 0116 262 3279

At Hear 4U, 227-229 Hinckley Rd, Leic, LE3 0TG

email :michellefh@gmail.com

TOP SEEDS!

A young tennis player from Western Park is celebrating with her teammates after helping Leicestershire become the 10 and under National Tennis champions.

Fallon Reid along with her squad of three beat Nottinghamshire, Warwickshire, Derbyshire and Lincolnshire to win the regional title before heading to Sunderland to battle it out in the national finals.



The team for the final was Talia Neilson-Gatenby, Tabitha Holmes, Fallon Reid and Sophia Middleton - they eased to victory in all three group matches to book a place in the final against Lancashire eventually winning 4-0 4-1 to secure the title.



Quality building work, extensions, conservatories & hard landscaping

**Contact Richard for a free quote on
07725 648605 or 0116 2514990**

evansbuildingservices.com

Henley Rd, Leicester

The poster features a vibrant pink and purple geometric background with several yellow musical notes scattered across it. A black rectangular box in the upper center contains the text 'DMU SQUARE MILE' in white, bold, sans-serif capital letters. Below this box, the words 'COMMUNITY CHOIR' are written in large, bold, black, sans-serif capital letters.

**DMU
SQUARE
MILE**

COMMUNITY CHOIR

Want to try something new?

Then join the DMU Square Mile Community
Choir!

The group welcomes anyone with a love of
singing and it's FREE to join!

Please contact the DMU Square Mile team for
more information:

T: (0116) 257 7135

E: squaremile@dmu.ac.uk

W: dmu.ac.uk/dmusquaremile



LEICESTER MELA

Sunday 21st August
Leicester Market
11:00am - 6:00pm

FREE Diabetes Risk Assessments
and a chance to find out about our
Square Mile India Project.

Join us for a free, fun-filled day out
for the whole family!



DMU SQUARE MILE

Square Mile is finding innovative ways to use DMU skills and expertise to create positive change across Leicester.

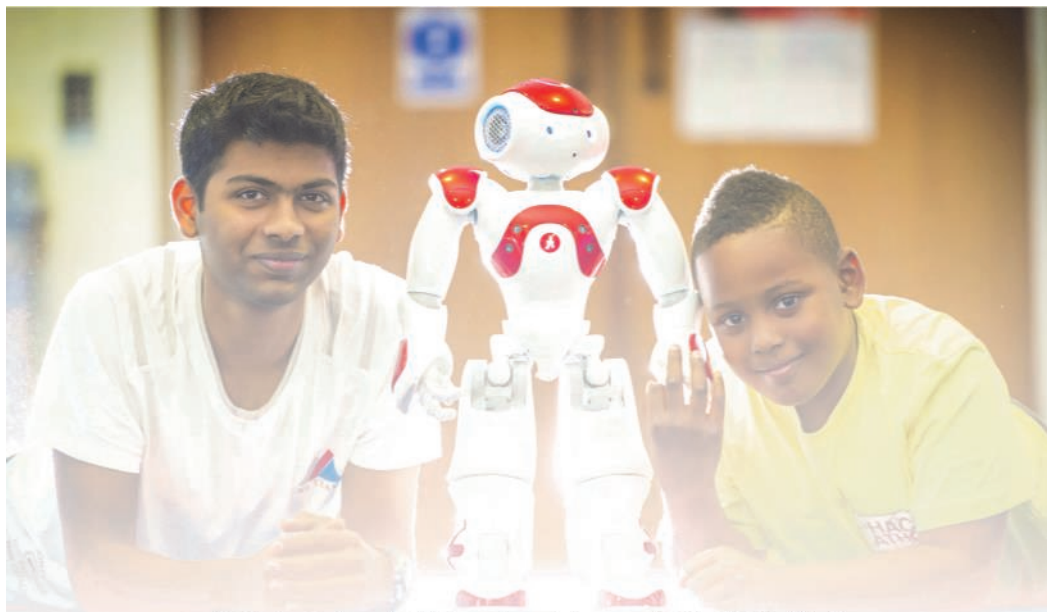
If you would like to find out more about DMU Square Mile or our projects and events, please get in touch.

E: squaremile@dmu.ac.uk

T: 0116 257 7102

W: dmu.ac.uk/dmusquaremile





CREAT-A-CON

Saturday 30th July
DMU Campus, Queens Building
11:00am - 5:00pm

FREE single day event which
provides activities and exhibitions
organised by science, technology,
engineering, and maths groups from
the local area.

For more information:

T: 0116 207 8680

The Beer Festival Is Back!

A Prosecco pedlar, a gin garden and an Everards family-friendly chill out zone are just some of the attractions at this summer's Western Park Beer Festival.

The charity event in aid of Menphys will be taking place at Doveland's Primary School, Hinckley Road, on August 19 and 20.

This summer's bash is being sponsored by Everards and The West End Brewery, on Braunstone Gate, and will bring together 35 exciting firkins, six keg lines and three ciders under one roof.

Mat Mabe, festival chairman, said: "This year we've been working that bit harder to please people – and we've been delighted so many local businesses have got behind us in sponsorship, which means we can make a real difference to a brilliant local charity such as Menphys."

"Everards and West End Brewery are our wonderful main sponsors, but other Leicestershire businesses such as Sturgess, Burleighs and Pukka Pies, plus Purity, in Warwickshire, have come forward to be part of a big fundraising team."

"We're still hoping more Leicester and Leicestershire businesses will contact us to support this really worthwhile cause – and then celebrate with us over some excellent beer and unbeatable Leicestershire cheese."

Tracey Morris, Menphys fundraising and



marketing manager, said: "We're thankful for the beer festival's support, which will help our befriending service that gives families caring for children and young people with disabilities some valuable respite. It will also help our I Can Do It Too campaign which encourages disabled children into sport, play and leisure activities."

Sponsors of the beer festival are being treated to a special tasting session led by an industry expert from Everards ahead of the festival opening at 5.30pm on Friday, August 19.

Children are welcome at the family session between midday and 6pm on Saturday, August 20. Both evening sessions finish at midnight.

Among the 23 nationwide breweries involved, seven are from Leicestershire: Charnwood, Dowbridge, Tres Bien, Langton, Market Harborough, Everards and West End Brewery.

www.westernparkbeerfestival.org.uk

And on Facebook and Twitter.

FLORA Bros

Quality Used Cars From £1000 to £5000

All Vehicles Serviced Valeted and MOT'd



Nissan Note 1.6 16v SVE Hatchback 5d 1597cc auto (06)

ONLY £3225



BMW 1 Series 1.6 116i SE Hatchback 5d 1596cc (05)

ONLY £3450

www.florabroscars.co.uk www.exchangeandmart.co.uk

Email: florabros@googlegmail.com

119-129 Fosse Road South Leicester LE3 0JU Tel: 0116 255 2229
Service and Repair Centre 2 Bonchurch St Leicester LE3 5EE T: 0116 262 8585

WESTERN PARK FESTIVAL

The fifth Western Park Festival kicked off with torrential rain and a wind so strong that the main stage blew away as the festival was getting started. With main stage hastily dismantled for safety reasons and the days musicians moved downhill to perform, the festival got off to a rip-roaring start as the weather improved.

Up to 8000 people from across West Leicester joined in the fun activities which included kickboxing, mini quad bikes, zorbing, funfair and a climbing wall. The beer tent did brisk business as revellers settled down to enjoy the local bands even if there may have been a few soggy rear ends at the end of the day.



tree and stump removal | tree pruning | planting | hedge maintenance | logs and wood chip | planning permission

Your local tree surgeon
call for a free, no obligation quote.



BUDDING
professional tree care

SKILLED & KNOWLEDGEABLE

QUALIFIED & INSURED

RELIABLE & FRIENDLY

0116 366 9975 | 07906 360 529
enquiries@buddingtrees.co.uk
buddingtrees.co.uk

**Keep Fit & Have Fun
With Hula Hooping!**

- Burn Up To 300 Calories An Hour
- Great Abdominal Exercise



Punky Hoops

Book Your Place @ flightfitness.co.uk

Punky Hoops Flight Fitness

Faircharm Industrial Estate, Leicester, LE3 2BU
www.punkyhoops.com



corzac

Roofing Services

**15 YEARS
EXPERIENCE**

Repairs
Re-slating
Re-tiling
Guttering
Lead Work

**FREE
NO OBLIGATION
QUOTATION**

With up to



10 Years Guarantee

Guttering install & Repair
Chimney Renovations
Fascias and Soffits
Brick Re-pointing
And Much More....

T: 0116 2223 883

M: 07855 251 998

www.corzacroofingservices.co.uk





HOME & BUSINESS CARE *DOMESTIC & COMMERCIAL*

We're Everything Your Home and Business Needs



We offer a comprehensive property maintenance service which includes:

- **PAINTING & DECORATING**
- **PLUMBING & TILING**
- **CARPENTRY & JOINERY**
- **FLOOR SANDING & STAINING**
- **GENERAL MAINTENANCE**

We are a locally based family business with over 20 years experience in the building trade.

Our aim is to complete a contract quickly and professionally without cutting corners and keep the cost low for our customers. If there are no requirements at the moment, please keep our telephone number handy... We may be a solution to a problem in the future!

office: 0116 254 9097 mobile: 07751 742 602

email: homeandbusinesscare@live.co.uk

ES Elizabeth Stone Gardens



Tel: 07838 391175

Your Local Expert Gardener!
Garden Maintenance
Lawn Care & Hedge Cutting
Garden Design
Specialist Pruning

Fully qualified with over 10 Years of Stately Home & Botanical Garden Experience

e: elizabeth@elizabethstonegardens.com



Look for es_gardens

Magic Murals

To Celebrate Leicester City Football Club winning the Premier League, a number of leading graffiti artists have produced original murals on key Leicester West End locations.

The wave of emotion and pride that engulfed the city and county throughout the Foxes' remarkable season is being captured in street art. The city council has commissioned the artworks to give visitors and residents the chance to re-live the memories of the fantastic season as they travel around Leicester.

Richard Wilson's enormous mural of the whole LCFC team on Kate Street has been added to with a Ranieri Roman Leicester mural on the wall of Brucciani's on Bath lane and a Football United Mural on the end terrace of Tudor Road.

Look out for more murals across the city this summer.



SD PLASTERING & TILING

All Aspects of Plastering and Tiling
 Domestic, Commercial & Insurance

FREE ESTIMATES



T: 0116 348 3354 M: 0771 353 1096

e: contact@sd-plasteringandtiling.com

www.sd-plasteringandtiling.com

MDL

HANDYMAN SERVICES

Gardening, General Repairs, Electrics, Locks,
 Plumbing, CRB Checked, 30 Years Experience

CALL MICK

07407 658 160

E: mdlhandymanservices@gmail.com

ARTI JEWELLERS

Est 1984



**Gold Bought For Cash
Competitive Prices!
Expert Service!
Top Quality!**

- Silver Jewellery
- Jewellery Repairs
- Ear & Nose Piercing
- 22ct Gold & White Gold
- Diamond & Platinum Rings



Tel: 0116 254 5091

www.artijewellers.com

65 NARBOROUGH RD, LEICESTER LE3 0LE

Plumbing & Heating

**RUDKIN &
HERBERT LTD**

Est.
1992

- All plumbing work undertaken
- Full heating systems
- High efficiency condensing boilers
- Boiler replacement
- System upgrades & flushing
- Landlord certificates
- Registered solar hot water installers
- Under floor heating systems
- Bathrooms, wetrooms & showers
- Registered solar PV system installers
- 7 year guarantee on all boiler installations

**NOW
OPEN**

**BATHROOM
& RENEWABLES
SHOWROOM**



£60 BOILER SERVICE - WITH THIS ADVERT

www.rudkinandherbert.co.uk

LEICESTER 0116 202 9775

HEAD OFFICE : 80 UPPERTON ROAD, LEICESTER, LE3 0HB



Need To Sell Your Home Fast?

CALL 07944 748595

When Mrs W needed a quick sale of her flat on Cherryleas Drive, she took advantage of a little known, almost unbelievable solution. She called and was able to secure a cash sale of the flat, in its current condition, and the money was in her bank in a matter of weeks.

If you own a property in Leicester and you want it sold fast just one phone call will take only 5 minutes and we will help you find a solution.

Call Adam now for **FREE** impartial advice on **07944 748595**

ALL domestic plumbing & heating work undertaken.

"Call us today"

West End
PLUMBING
AND HEATING LIMITED



Boiler Replacements
System Upgrades
Boiler Maintenance & Breakdowns
Full Central Heating
Domestic Gas Installation & Repairs
Underfloor Heating
Bathroom Refits
All General Plumbing Work

OFFICE
0116 254 8462
MOBILE
0771 7477 532

57 Letchworth Road, Leicester, LE3 0FL

E-mail: westendplumbingandheating@hotmail.co.uk

Want to Pay Less Tax or Starting Out in Business?
Need a Pro-active Accountant?
Struggling with your Tax Return?
LET US HELP

K KIRT & CO
ACCOUNTANTS

ACCOUNTING TAX & BUSINESS ADVICE

Friendly and Professional Local Service

0116 285 2694

60 Hincley Road Leicester LE3 0RB

e: info@kirt-accountants.co.uk

www.kirt-accountants.co.uk

CIMA

MPH CONSTRUCTION & CARPENTRY

- Loft Conversions
- Extensions & Refurbishments
- Shop & Bar Fit Out

As seen on DIY SOS The Big Build

All aspects of carpentry and building work undertaken from design to completion including all relevant inspections & certificates

Contact

Matt Hackett

07581 430 638 or 0116 225 8344

3rd Generation Carpenter

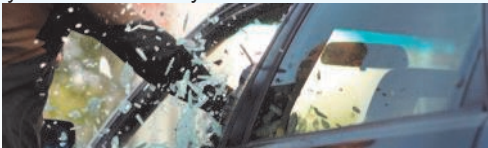
FOLLOW
US ON



July Police Update

Again another busy month across the Policing area for your local Neighbourhood Officers.

Two very different types of crimes were prominent over the course of the last month, firstly the vehicle crime continued where the Modus Operandi (MO) was to crudely smash vehicle windows and take whatever was left on show. We have continued to conduct high visibility patrols and educate drivers through leaflet drops and social media postings, this has resulted in a downward trend in the number of offences. We have arrested three local men in separate incidents committing these offences. All three have been charged with vehicle crimes and remanded to Court. However, it is never good to get complacent so our message is still "LEAVE IT ON SHOW EXPECT IT TO GO" Please think about your vehicle security when it is left unattended.



Secondly, over the last month we have seen a spree of violent Street robberies in and around the Narborough Road area of the Westcotes Ward. They have predominantly occurred late at night and in the early hours of the morning. We have increased our patrols both in uniform and non-uniform and urge people to take simple steps to stay safe and prevent further offences. Avoid walking alone late at night and stick to the busier well-lit areas, keep valuables out of sight and wear handbags across your chest not just on the shoulder. Our investigations continue and we will report further developments in the local media with official press releases. I would urge that if you can add anything to our investigations to please call Leicestershire Police on 101 or Crimestoppers, which is anonymous on 0800 555 111.

Although it hasn't become a crime spree per se, recently we have noticed a number of break-ins to business premises where front doors have had glass panels broken and small items including cash being stolen. We urge the local businesses to review your security and do not leave anything inside the premises that is easy to take. If you would like any crime prevention advice please make contact with one of your local Neighbourhood Officers and we will be happy to help.

Finally I am moving on to pastures new where I will be taking up a new role at Police Headquarters, I am being replaced on the Western Ward by Sgt Simon Walters. This monthly Police update will continue with the return of Sgt Mike Hooper.

Sgt Andy Stevens

Tony Huxley's Compost Corner



Horticulturally speaking I'm as metro-sexual as the next gardener. I've no problem with pretty little flowers or delicate blooms with girly names. I don't even mind pink as a colour. But sometimes a red blooded gardener wants big, bold plants with a bit of muscle that can handle themselves at the back of a border. It's worth having some prominent perennials in any reasonable sized planting area to give structure through the summer. Now is the time macho herbaceous perennials start to perform.

Architecturally you can't beat the artichokes. Remove the flowers if you just want to admire the silver green foliage. The edible blooms may match those of any exotic Protea but sap the plants strength.

The cardoon (Cynara Car-



dunculus), it's cousin, is also spectacular. The stems are edible if blanched like celery. Two plants that mix business and pleasure. Both prefer fertile, moist but free draining soil. Aphids can be a problem, but nothing a quick spray with some soapy water won't fix.

Echinops or Globe Thistles are another manly favourite with handsome foliage. Bees and butterflies love the vivid blue spheres of blooms. This plant tolerates poorer, drier soils but can be prone to mildew. Excessive shade, dampness and crowding can contribute to this. Remove and dispose of infected foliage in the autumn to stop spores spreading.

As macho flowers go you can't beat *Verbascum olympicum*. This yellow flowered brute has already reached over 2 meters height in my garden, and looks capable of wrestling a Triffid. Now that's what I call a man's plant!

Tony Huxley



Globe Thistle

Martin Page

YOUR **LOCAL** TREE SURGEON

- ✧ Are your trees too tall, blocking light or untidy?
- ✧ Do your hedges, conifers or shrubs need trimming?
- ✧ Would you like to remove that stubborn stump?

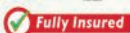
With 30 years of working in your area, I would be pleased to give you free advice and a free quotation

Call me now on **0116 250 5848**

www.charnwoodtrees.com

Constantly Recommended!

I ALSO SELL...
high quality
firewood logs



mick&den
furniture

**OUR NEW
FURNITURE STORE
NOW OPEN!**



Our New Showroom Offers New,
Used, Antique and Retro Furniture
at Great Prices!
Open: Mon-Sat 9-5pm & Sun 10-4pm

0116 233 8828

07710 025109

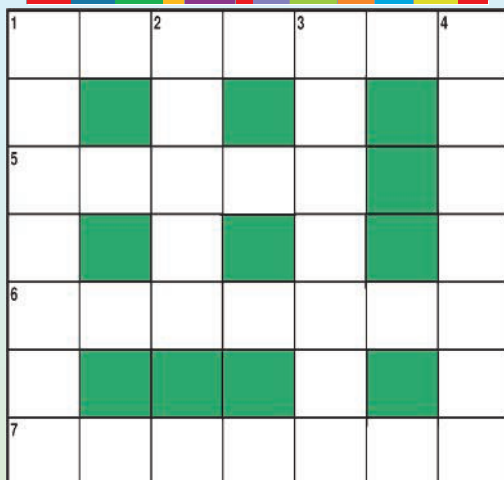
email: mick@mickanddens.co.uk
www.mickanddens.co.uk
www.mdfurnitureland.co.uk

Sutton Hill Farm, Coventry Road,
Sutton in Elms, Leicestershire, LE9 6QD

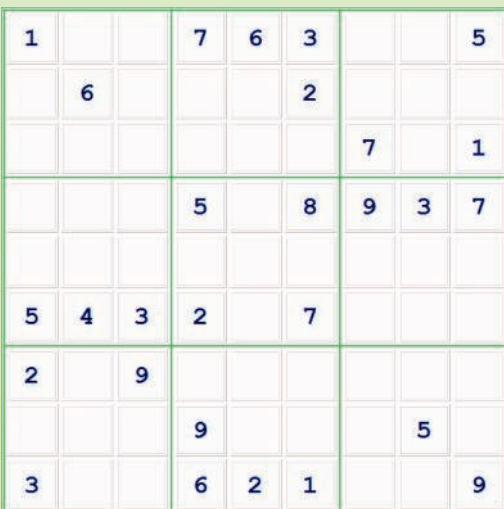
10% OFF WITH THIS AD

Valid until 31.8.17

BRAIN TAZERS



1 Across: July fortnight **1 Down:** Windy 2:
or cry 3: Barking comic verse 4: Sailor
5: Squeezed dry 6: Receive as an heir 7: Plays
the odds. © Paul Towers



Solutions at www.westernparkgazette.co.uk

Got a local story or a great picture?

Are you holding an event?

Are you doing something special?

Tell us all about it!

editor@westernparkgazette.co.uk

Or via Twitter & Facebook

THE CARPET
CAVERN
LEICESTER

Free Estimates & Free Measuring
Quality Carpets Laminates & Vinyls

15% OFF*
ALL FLOORING*
**MORE GREAT
BARGAINS
IN STORE**
0116 255 4335
FINANCE AVAILABLE
www.thecarpetcavern.co.uk
info@thecarpetcavern.co.uk

25 Nevanthon Road, Leicester, LE3 6DR

** Terms & Conditions apply.
Time limited & not in conjunction with any other offer*

Barkers



**NICHOLAS
Humphreys**
ESTATE AGENT

WE CAN SELL YOUR STUDENT HOUSES
INSTRUCT US TO SELL YOUR STUDENT HOUSE DURING JULY TO RECEIVE
UP TO 50% OFF OUR SELLING FEES
WE HAVE A DATABASE OF INVESTORS LOOKING FOR STUDENT HOUSES
LET US SHOW THEM ROUND WITHOUT COMING TO THE OPEN MARKET
FOR A 50% REDUCTION IN OUR SELLING FEE

CALL US TODAY ON 0116 275 8338

*TERMS AND CONDITIONS APPLY, PLEASE ENQUIRE VIA OUR OFFICE FOR FULL DETAILS

WOODGATE COMPUTERS

One call that's all! Computer services you can depend on!



- APPLE MAC REPAIR
- LAPTOP REPAIR
- PC REPAIR
- DATA RECOVERY
- MOBILE PHONE REPAIR
- GAME CONSOLE REPAIR
- CCTV
- NETWORKING
- HOME & BUSINESS SERVICES



Independent Repair Centre for



WOODGATE COMPUTERS
70, WOODGATE
LEICESTER LE3 5GG

PHONE 0116 262 3999
FREEPHONE 0800 644 0686
MOBILE 0791 337 2633

www.woodgatecomputers.com



DAVE'S AUTO SERVICES

The MOT Specialist **Getting You Back On The Road**

MOT's FOR VEHICLE CLASSES 4 & 7
FAST & CONVENIENT - NO NEED TO BOOK
WAITING AREA
FREE RE-TEST

OPEN MON: FRI 7.45am-6.00pm SAT: 7.45am-2.30pm

Unit 4 Duns Lane Leicester LE3 5LX

0116 253 8561

www.davesautos.co.uk

VOSA



AUTHORISED M.O.T
TESTING FACILITY